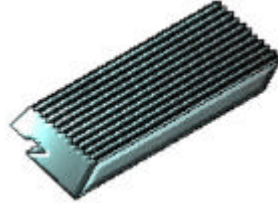




Quality Chaser Company 120 E. Pond Drive Romeo, MI U.S.A.

Quality™ Chasers for Landis Style Die Heads



TANGENT DIE HEAD CHASERS

ESSENTIALS:

The following pages list Quality™ Chasers for Landis style die heads in many popular sizes. The numbers listed across each row represent the standard chamfer angles that are available. Tools listed in the first column are stocked without the chamfer or cutting edge ground, hence the term "Semi-Finished". The following six columns list finished chasers with the final grinding operations complete. Please order finished numbers whenever possible.

These chasers are manufactured from premium grade M2 steel and hardened to exacting standards.

SPECIFICS:

For proper order entry, you will need the following:

1. Number of sets required
2. Part Number
3. Material being threaded

If no part number is available, you must also supply:

4. Pitch of thread to be cut
5. Thread Form (UN, ACME, METRIC, PIPE, etc.)
6. Blank Size (width x length)
7. Chamfer Angle and 'Long' or 'Short'

TO ORDER

USE OUR 24 HOUR TOLL-FREE FAX LINE

800-562-7799

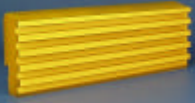
OR

CALL OUR CUSTOMER SERVICE DEPT.

586-752-5555

MONDAY - FRIDAY

8:00 AM - 5:00 PM EST



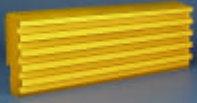
**ISO METRIC THREAD FORMS
RIGHT HAND THREADS**

THREAD PITCH	BLANK SIZE	PRICE CODE	STANDARD CHAMFER ANGLES						
			SEMI FINISHED	45	30	20	20	15	15
				SHORT	SHORT	LONG	SHORT	LONG	
.6 MM	1/2 x 1 R.D.=.187	PB	92751	20801	20802	20803	20804	20805	20806
	1/2 x 1 R.D.=.257	PB	92753	20807	20808	20809	20810	20811	20812
	5/8 x 1 1/8	PG	92755	20813	20814	20815	20816	20817	20818
	3/4 x 1 5/8	PO	92757	20819	20820	20821	20822	20823	20824
	15/16 x 2 1/8	PQ	92759	20825	20826	20827	20828	20829	20830
.7 MM	1/2 x 1 R.D.=.187	PB	92761	20831	20832	20833	20834	20835	20836
	1/2 x 1 R.D.=.257	PB	92763	20837	20838	20839	20840	20841	20842
	5/8 x 1 1/8	PG	92765	20843	20844	20845	20846	20847	20848
	3/4 x 1 5/8	PO	92767	20849	20850	20851	20852	20853	20854
	15/16 x 2 1/8	PQ	92769	20855	20856	20857	20858	20859	20860
.75 MM	1/2 x 1 R.D.=.187	PB	92771	20861	20862	20863	20864	20865	20866
	1/2 x 1 R.D.=.257	PB	92773	20867	20868	20869	20870	20871	20872
	5/8 x 1 1/8	PG	92775	20873	20874	20875	20876	20877	20878
	3/4 x 1 5/8	PL	92777	20879	20880	20881	20882	20883	20884
	15/16 x 2 1/8	PQ	92779	20885	20886	20887	20888	20889	20890
.8 MM	1/2 x 1 R.D.=.187	PB	92781	20891	20892	20893	20894	20895	20896
	1/2 x 1 R.D.=.257	PB	92783	20897	20898	20899	20900	20901	20902
	5/8 x 1 1/8	PG	92785	20903	20904	20905	20906	20907	20908
	3/4 x 1 5/8	PL	92787	20909	20910	20911	20912	20913	20914
	15/16 x 2 1/8	PQ	92789	20915	20916	20917	20918	20919	20920
1.0 MM	1/2 x 1 R.D.=.187	PB	92791	20921	20922	20923	20924	20925	20926
	1/2 x 1 R.D.=.257	PB	92793	20927	20928	20929	20930	20931	20932
	5/8 x 1 1/8	PG	92795	20933	20934	20935	20936	20937	20938
	3/4 x 1 5/8	PL	92797	20939	20940	20941	20942	20943	20944
	15/16 x 2 1/8	PQ	92799	20945	20946	20947	20948	20949	20950
	1 x 4	PV	92801	20951	20952	20953	20954	20955	20956
	1 3/64 x 3	QF	92803	20957	20958	20959	20960	20961	20962
	1 3/64 x 4	QK	92805	20963	20964	20965	20966	20967	20968
1.25 MM	1/2 x 1 R.D.=.187	PB	92807	20969	20970	20971	20972	20973	20974
	1/2 x 1 R.D.=.257	PB	92809	20975	20976	20977	20978	20979	20980
	5/8 x 1 1/8	PG	92811	20981	20982	20983	20984	20985	20986
	3/4 x 1 5/8	PL	92813	20987	20988	20989	20990	20991	20992
	15/16 x 2 1/8	PQ	92815	20993	20994	20995	20996	20997	20998
	1 x 4	PV	92817	20999	21000	21001	21002	21003	21004
	1 3/64 x 3	QF	92819	21005	21006	21007	21008	21009	21010
	1 3/64 x 4	QK	92821	21011	21012	21013	21014	21015	21016
1.5 MM	1/2 x 1 R.D.=.187	PB	92823	21017	21018	21019	21020	21021	21022
	1/2 x 1 R.D.=.257	PB	92825	21023	21024	21025	21026	21027	21028
	5/8 x 1 1/8	PG	92827	21029	21030	21031	21032	21033	21034
	3/4 x 1 5/8	PL	92829	21035	21036	21037	21038	21039	21040
	15/16 x 2 1/8	PQ	92831	21041	21042	21043	21044	21045	21046
	1 x 4	PV	92833	21047	21048	21049	21050	21051	21052
	1 3/64 x 3	QF	92835	21053	21054	21055	21056	21057	21058
	1 3/64 x 4	QK	92837	21059	21060	21061	21062	21063	21064
1.75 MM	1/2 x 1 R.D.=.187	PB	92839	21065	21066	21067	21068	21069	21070
	1/2 x 1 R.D.=.257	PB	92841	21071	21072	21073	21074	21075	21076
	5/8 x 1 1/8	PG	92843	21077	21078	21079	21080	21081	21082
	3/4 x 1 5/8	PL	92845	21083	21084	21085	21086	21087	21088
	15/16 x 2 1/8	PQ	92847	21089	21090	21091	21092	21093	21094
	1 x 4	PV	92849	21095	21096	21097	21098	21099	21100
	1 3/64 x 3	QF	92851	21101	21102	21103	21104	21105	21106
	1 3/64 x 4	QK	92853	21107	21108	21109	21110	21111	21112
2.0 MM	5/8 x 1 1/8	PG	92855	21113	21114	21115	21116	21117	21118
	3/4 x 1 5/8	PL	92857	21119	21120	21121	21122	21123	21124
	15/16 x 2 1/8	PQ	92859	21125	21126	21127	21128	21129	21130
	1 x 4	PV	92861	21131	21132	21133	21134	21135	21136
	1 3/64 x 3	QF	92863	21137	21138	21139	21140	21141	21142
	1 3/64 x 4	QK	92865	21143	21144	21145	21146	21147	21148

Quality™ CHASERS for
LANDIS STYLE DIE HEADS

RD = Root Diameter

RED = Normally available for IMMEDIATE SHIPMENT



**ISO METRIC THREAD FORMS
RIGHT HAND THREADS**

THREAD PITCH	BLANK SIZE	PRICE CODE	STANDARD CHAMFER ANGLES						
			SEMI FINISHED	45	30	20	20	15	15
				SHORT	SHORT	LONG	SHORT	LONG	
2.5 MM	3/4 x 1 5/8	PL	92867	21149	21150	21151	21152	21153	21154
	15/16 x 2 1/8	PQ	92869	21155	21156	21157	21158	21159	21160
	1 x 4	PV	92871	21161	21162	21163	21164	21165	21166
	1 3/64 x 3	QF	92873	21167	21168	21169	21170	21171	21172
	1 3/64 x 4	QK	92875	21173	21174	21175	21176	21177	21178
3.0 MM	15/16 x 2 1/8	PQ	92877	21179	21180	21181	21182	21183	21184
	1 1/16 x 4	QA	92879	21185	21186	21187	21188	21189	21190
	1 3/64 x 3	QF	92881	21191	21192	21193	21194	21195	21196
	1 3/64 x 4	QK	92883	21197	21198	21199	21200	21201	21202
3.5 MM	15/16 x 2 1/8	PQ	92885	21203	21204	21205	21206	21207	21208
	1 1/16 x 4	QA	92887	21209	21210	21211	21212	21213	21214
	1 3/64 x 4	QN	92889	21215	21216	21217	21218	21219	21220
	1 7/64 X 4	QP	92891	21221	21222	21223	21224	21225	21226
	1 1/4 X 2 3/4	QU	92893	21227	21228	21229	21230	21231	21232
4.0 MM	1 1/16 x 4	QA	92895	21233	21234	21235	21236	21237	21238
	1 3/64 x 4	QN	92897	21239	21240	21241	21242	21243	21244
	1 7/64 X 4	QP	92899	21245	21246	21247	21248	21249	21250
	1 1/4 X 2 3/4	QU	92901	21251	21252	21253	21254	21255	21256
4.5 MM	1 1/4 X 2 3/4	QU	92903	21257	21258	21259	21260	21261	21262
	1 1/4 X 4	QZ	92905	21263	21264	21265	21266	21267	21268
	1 1/2 X 4	RE	92907	21269	21270	21271	21272	21273	21274
	1 1/2 X 5	RJ	92909	21275	21276	21277	21278	21279	21280
5.0 MM	1 1/4 X 2 3/4	QU	92911	21281	21282	21283	21284	21285	21286
	1 1/4 X 4	QZ	92913	21287	21288	21289	21290	21291	21292
	1 1/2 X 4	RE	92915	21293	21294	21295	21296	21297	21298
	1 1/2 X 5	RJ	92917	21299	21300	21301	21302	21303	21304

Quality™ CHASERS for LANDIS STYLE DIE HEADS

RD = Root Diameter

RED = Normally available for IMMEDIATE SHIPMENT