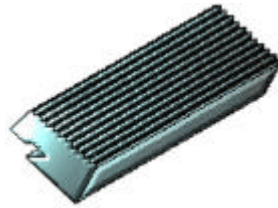




## Quality™ Chasers for Landis Style Die Heads



TANGENT DIE HEAD CHASERS

### ESSENTIALS:

The following pages list Quality™ Chasers for Landis style die heads in many popular sizes. The numbers listed across each row represent the standard chamfer angles that are available. Tools listed in the first column are stocked without the chamfer or cutting edge ground, hence the term "Semi-Finished". The following six columns list finished chasers with the final grinding operations complete. Please order finished numbers whenever possible.

These chasers are manufactured from premium grade M2 steel and hardened to exacting standards.

### SPECIFICS:

#### For proper order entry, you will need the following:

1. Number of sets required
2. Part Number
3. Material being threaded

#### If no part number is available, you must also supply:

4. Diameter, Pitch and Thread Form
5. Rake Angle (Cutting End Grind)
6. Blank Size (Width x Length)
7. Chamfer Angle
8. Die Head Model, Size and Serial Number
9. Number of chasers per set

\* For unusual or modified standard thread forms, a part print is required  
Special chasers "made to order" cannot be cancelled or returned for credit.

**TO ORDER**

**USE OUR 24 HOUR TOLL-FREE FAX LINE**

**800-562-7799**

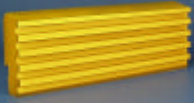
OR

**CALL OUR CUSTOMER SERVICE DEPT.**

**586-752-5555**

**MONDAY - FRIDAY**

**8:00 AM - 5:00 PM EST**



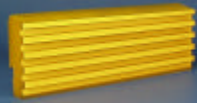
Quality™ CHASERS FOR LANDIS STYLE DIE HEADS  
**AMERICAN STANDARD PIPE THREADS**  
**NPT & NPS**

1

| THREAD PITCH                         | BLANK SIZE    | PRICE CODE | STANDARD CHAMFER ANGLES |       |          |          |         |          |         |
|--------------------------------------|---------------|------------|-------------------------|-------|----------|----------|---------|----------|---------|
|                                      |               |            | SEMI FINISHED           | 45    | 30 SHORT | 20 SHORT | 20 LONG | 15 SHORT | 15 LONG |
| <b>27 NPT</b><br>(TAPER IN CHASER)   | 5/8 x 1 1/8   | PF         | 92951                   | 21401 | 21402    | 21403    | 21404   | 21405    | 21406   |
|                                      | 3/4 x 1 5/8   | PK         | 92953                   | 21407 | 21408    | 21409    | 21410   | 21411    | 21412   |
| <b>27 NPT</b><br>(TAPER IN HOLDER)   | 5/8 x 1 1/8   | PF         | 92955                   | 21413 | 21414    | 21415    | 21416   | 21417    | 21418   |
|                                      | 3/4 x 1 5/8   | PO         | 92957                   | 21419 | 21420    | 21421    | 21422   | 21423    | 21424   |
| <b>27 NPS</b>                        | 5/8 x 1 1/8   | PF         | 92959                   | 21425 | 21426    | 21427    | 21428   | 21429    | 21430   |
|                                      | 3/4 x 1 5/8   | PK         | 92961                   | 21431 | 21432    | 21433    | 21434   | 21435    | 21436   |
| <b>18 NPT</b><br>(TAPER IN CHASER)   | 5/8 x 1 1/8   | PF         | 92963                   | 21437 | 21438    | 21439    | 21440   | 21441    | 21442   |
|                                      | 3/4 x 1 5/8   | PK         | 92965                   | 21443 | 21444    | 21445    | 21446   | 21447    | 21448   |
|                                      | 15/16 x 2 1/8 | PT         | 92967                   | 21449 | 21450    | 21451    | 21452   | 21453    | 21454   |
| <b>18 NPT</b><br>(TAPER IN HOLDER)   | 5/8 x 1 1/8   | PJ         | 92969                   | 21455 | 21456    | 21457    | 21458   | 21459    | 21460   |
|                                      | 3/4 x 1 5/8   | PO         | 92971                   | 21461 | 21462    | 21463    | 21464   | 21465    | 21466   |
|                                      | 15/16 x 2 1/8 | PP         | 92973                   | 21467 | 21468    | 21469    | 21470   | 21471    | 21472   |
|                                      | 1 3/64 X 4    | QJ         | 92975                   | 21473 | 21474    | 21475    | 21476   | 21477    | 21478   |
| <b>18 NPS</b>                        | 5/8 x 1 1/8   | PF         | 92977                   | 21479 | 21480    | 21481    | 21482   | 21483    | 21484   |
|                                      | 3/4 x 1 5/8   | PK         | 92979                   | 21485 | 21486    | 21487    | 21488   | 21489    | 21490   |
|                                      | 15/16 x 2 1/8 | PP         | 92981                   | 21491 | 21492    | 21493    | 21494   | 21495    | 21496   |
|                                      | 1 3/64 X 4    | QJ         | 92983                   | 21497 | 21498    | 21499    | 21500   | 21501    | 21502   |
| <b>14 NPT</b><br>(TAPER IN CHASER)   | 5/8 x 1 1/8   | PF         | 92985                   | 21503 | 21504    | 21505    | 21506   | 21507    | 21508   |
|                                      | 3/4 x 1 5/8   | PK         | 92987                   | 21509 | 21510    | 21511    | 21512   | 21513    | 21514   |
|                                      | 15/16 x 2 1/8 | PT         | 92989                   | 21515 | 21516    | 21517    | 21518   | 21519    | 21520   |
| <b>14 NPT</b><br>(TAPER IN HOLDER)   | 5/8 x 1 1/8   | PF         | 92991                   | 21521 | 21522    | 21523    | 21524   | 21525    | 21526   |
|                                      | 3/4 x 1 5/8   | PK         | 92993                   | 21527 | 21528    | 21529    | 21530   | 21531    | 21532   |
|                                      | 15/16 x 2 1/8 | PP         | 92995                   | 21533 | 21534    | 21535    | 21536   | 21537    | 21538   |
|                                      | 1 x 4         | PU         | 92997                   | 21539 | 21540    | 21541    | 21542   | 21543    | 21544   |
|                                      | 1 3/64 x 3    | QE         | 92999                   | 21545 | 21546    | 21547    | 21548   | 21549    | 21550   |
|                                      | 1 3/64 X 4    | QJ         | 93001                   | 21551 | 21552    | 21553    | 21554   | 21555    | 21556   |
| <b>14 NPS</b>                        | 5/8 x 1 1/8   | PF         | 93003                   | 21557 | 21558    | 21559    | 21560   | 21561    | 21562   |
|                                      | 3/4 x 1 5/8   | PK         | 93005                   | 21563 | 21564    | 21565    | 21566   | 21567    | 21568   |
|                                      | 15/16 x 2 1/8 | PP         | 93007                   | 21569 | 21570    | 21571    | 21572   | 21573    | 21574   |
|                                      | 1 x 4         | PU         | 93009                   | 21575 | 21576    | 21577    | 21578   | 21579    | 21580   |
|                                      | 1 3/64 x 3    | QE         | 93011                   | 21581 | 21582    | 21583    | 21584   | 21585    | 21586   |
|                                      | 1 3/64 x 4    | QJ         | 93013                   | 21587 | 21588    | 21589    | 21590   | 21591    | 21592   |
| <b>11.5 NPT</b><br>(TAPER IN CHASER) | 15/16 x 2 1/8 | PT         | 93015                   | 21593 | 21594    | 21595    | 21596   | 21597    | 21598   |
| <b>11.5 NPT</b><br>(TAPER IN HOLDER) | 15/16 x 2 1/8 | PP         | 93017                   | 21599 | 21600    | 21601    | 21602   | 21603    | 21604   |
|                                      | 1 3/64 x 4    | QJ         | 93019                   | 21605 | 21606    | 21607    | 21608   | 21609    | 21610   |
|                                      | 1 1/4 X 2 3/4 | QT         | 93021                   | 21611 | 21612    | 21613    | 21614   | 21615    | 21616   |
|                                      | 1 1/4 X 4     | QY         | 93023                   | 21617 | 21618    | 21619    | 21620   | 21621    | 21622   |
| <b>11.5 NPS</b>                      | 15/16 x 2 1/8 | PP         | 93025                   | 21623 | 21624    | 21625    | 21626   | 21627    | 21628   |
|                                      | 1 3/64 x 4    | QJ         | 93027                   | 21629 | 21630    | 21631    | 21632   | 21633    | 21634   |
|                                      | 1 1/4 X 2 3/4 | QT         | 93029                   | 21635 | 21636    | 21637    | 21638   | 21639    | 21640   |
|                                      | 1 1/4 X 4     | QY         | 93031                   | 21641 | 21642    | 21643    | 21644   | 21645    | 21646   |
| <b>8 NPT</b><br>(TAPER IN HOLDER)    | 15/16 x 2 1/8 | PP         | 93033                   | 21647 | 21648    | 21649    | 21650   | 21651    | 21652   |
|                                      | 2 1/4 X 5     | RN         | 93035                   | 21653 | 21654    | 21655    | 21656   | 21657    | 21658   |
| <b>8 NPS</b>                         | 15/16 x 2 1/8 | PP         | 93037                   | 21659 | 21660    | 21661    | 21662   | 21663    | 21664   |
|                                      | 2 1/4 X 5     | RN         | 93039                   | 21665 | 21666    | 21667    | 21668   | 21669    | 21670   |

Quality™ CHASERS for  
**LANDIS STYLE DIE HEADS**

RED = Normally available for IMMEDIATE SHIPMENT



Quality™ CHASERS FOR LANDIS STYLE DIE HEADS  
**AMERICAN STANDARD PIPE THREADS**  
**DROP TOOTH**

**2**

| THREAD PITCH       | BLANK SIZE    | PRICE CODE | STANDARD CHAMFER ANGLES |          |         |          |         |
|--------------------|---------------|------------|-------------------------|----------|---------|----------|---------|
|                    |               |            | SEMI FINISHED           | 15 SHORT | 15 LONG | 20 SHORT | 20 LONG |
| <b>27P DT</b>      | 15/16 x 2 1/8 | <b>PP</b>  | <b>92958</b>            |          |         | 31421    | 31422   |
| <b>18P DT</b>      | 15/16 x 2 1/8 | <b>PP</b>  | <b>92974</b>            |          |         | 31469    | 31470   |
| <b>14 P DT</b>     | 15/16 x 2 1/8 | <b>PP</b>  | <b>92996</b>            |          |         | 31535    | 31536   |
|                    | 1 3/64 x 4    | <b>QJ</b>  | <b>93002</b>            | 31555    | 31556   |          |         |
| <b>11 1/2P DT</b>  | 1 1/4 x 2 3/4 | <b>QT</b>  | <b>93030</b>            | 31615    | 31616   |          |         |
|                    | 1 1/4 x 4     | <b>QY</b>  | <b>93024</b>            | 31621    | 31622   |          |         |
| <b>8P DT 4/set</b> | 2 1/4 x 5     | <b>RN</b>  | <b>93036</b>            | 31657    | 31658   |          |         |
|                    | 2 1/4 x 5     | <b>RN</b>  | <b>93036</b>            | 31657 N  | 31658 N |          |         |
| <b>8P DT 6/set</b> | 2 1/4 x 5     | <b>WC</b>  | <b>93561</b>            | 31659    | 31660   |          |         |

Quality™ CHASERS for  
**LANDIS STYLE DIE HEADS**

**RED** = Normally available for IMMEDIATE SHIPMENT

All chasers have standard 22° rake and standard lead for the end grind. All are taper-in-holder.

Part numbers coded with "N" are configured for use on 16TXX Lanco die heads that require a set screw notch. Otherwise, they are identical to the standard tool.